



MetroParks

of Butler County, OH



Indian Creek MetroPark

Greenspace Metrics that Matter

An Annual Report to the Citizens of Butler County about the Activities of their Park System.



Chrisholm MetroPark



Gilmore MetroPark

2019



Rentschler Forest MetroPark

BOARD OF PARK COMMISSIONERS

The Board of Park Commissioners is a three-member body whose members, according to state law, are appointed by the Presiding Judge of the Butler County Probate Court. Park Commissioners serve three-year terms. Members of the Board of Park Commissioners are volunteers, who serve without pay and make the policy decisions needed to chart the present and future course of MetroParks of Butler County.

Cynamon Trokhan
President

Gregory T. Amend
Vice President

Daryl Nelson
Member

EXECUTIVE DIRECTOR
(Secretary of the Board)
Jonathan R. Granville



Board of Park Commissioners
(L-R) Nelson, Trokhan, Amend

FOR MORE INFORMATION

MetroParks of Butler County
2051 Timberman Road
Hamilton, OH 45013

513.867.5835

YourMetroParks.net

info@YourMetroParks.net

A MESSAGE FROM THE EXECUTIVE DIRECTOR



As **YOUR** MetroParks checks in with the 2019 edition of “Greenspace Metrics that Matter”, MetroParks would like to thank you, the park system’s customers and owners, for your continued support. MetroParks is proud to operate, improve and protect the 4,700 owned and managed acres in the MetroParks system as essential resources for the citizens of Butler County.

2019 was an important year for MetroParks. In 2019, MetroParks saw record breaking visitation to the parks, with an estimated 1.1 million visitor occurrences to 11 parks, 60 miles of trails and approximately 85 different park facilities across the county. More people than ever before are engaging in MetroParks’ public programs, enjoying time away from screens on a playground, or hiking along the trails, streams, and prairies MetroParks protects and conserves. If you haven’t visited lately, you should. With the support of many, MetroParks becomes more exciting every day.

In 2019, the Board of Park Commissioners also began a comprehensive update to the MetroParks Strategic Plan. The new Strategic Plan will include updates to:

- *MetroParks’ Mission and Vision statements*
- *MetroParks’ organizational real estate objectives*
- *Park categorizations and goals for facility updates and improvements*
- *Improvement priorities at reserve locations*

As Butler County develops faster than almost any other county in Ohio and the demand for natural greenspace becomes greater, it’s more important now than ever before that MetroParks updates its strategic plan to ensure that all Butler County residents can access MetroParks’ trails, facilities and natural areas in the future.

On behalf of the Board of Park Commissioners, thank you for your continued support of MetroParks of Butler County. I am pleased to provide a brief summary of how your investments in the park system are put to work.

Jonathan R. Granville
Executive Director

Voice of America MetroPark



MISSION

Our mission is to provide a superior park system that maximizes the community's quality of life through conservation, education, and recreation.

FUNDING

As an Ohio park district, MetroParks of Butler County is a separate political subdivision of the State of Ohio, organized under Chapter 1545 of the Ohio Revised Code. The park system serves and is primarily funded by support from its customer/owners, the residents of Butler County.

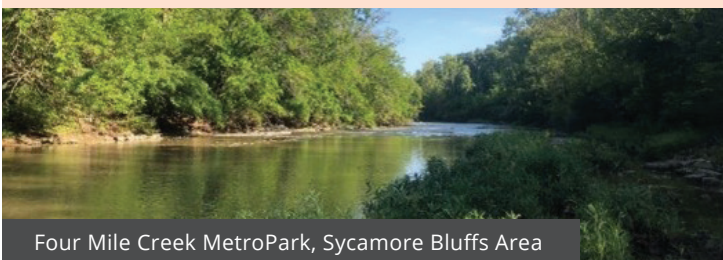
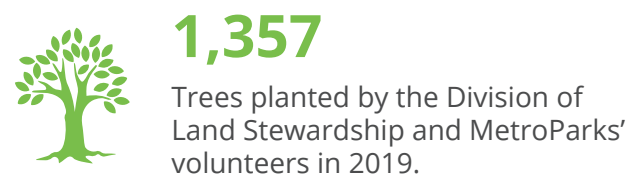
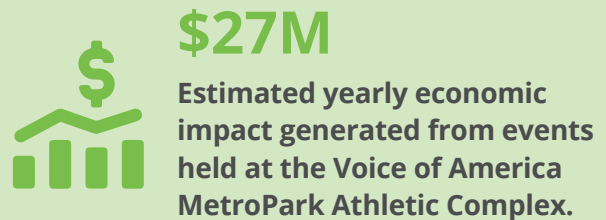


Rentschler Forest MetroPark – Cascade Trail

PARKS

Bicentennial Commons <i>City of Middletown</i>	Gilmore MetroPark <i>City of Hamilton</i>
Chrisholm MetroPark <i>Madison Township</i>	Governor Bebb MetroPark <i>Morgan Township</i>
Elk Creek MetroPark <i>Madison Township</i>	Great Miami River Trail
Forest Run MetroPark <i>Ross Township</i>	Indian Creek MetroPark <i>Reily Township</i>
Four Mile Creek MetroPark <i>Cities of Hamilton and Oxford, Oxford Township</i>	Rentschler Forest MetroPark <i>Fairfield Township</i>
	Voice of America MetroPark <i>West Chester Township</i>

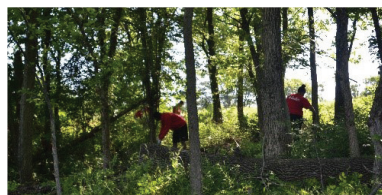
A METROPARKS SNAPSHOT: By the Numbers



Four Mile Creek MetroPark, Sycamore Bluffs Area



Mud Mania – Rentschler Forest MetroPark



Honda Service Day – Forest Run MetroPark, Timberman Ridge Area

Park Planning Milestones

HIGHLIGHTS OF PARK IMPROVEMENTS AND PLANNING

CITY OF MIDDLETOWN

Bicentennial Commons MetroPark

A bike repair station was added to the River Center at Bicentennial Commons, located on the Great Miami River Trail. The bike repair station is available during regular park hours, and was funded by the Friends of MetroParks via a grant received from the Middletown Community Foundation.



Bike Repair Station – Bicentennial Commons, River Center



Farmscape Ribbon Cutting – Chrisholm MetroPark

MADISON TOWNSHIP

• Chrisholm MetroPark

Renovations to the Chrisholm Farmscape were completed in 2019, with the Farmscape fully reopening to the public in the fall. Updates incorporated a refurbished barn with animal stalls and new pasture areas into the Farmscape. The Farmscape houses goats, chickens and a rabbit, which are key to Chrisholm's educational programming.

• Elk Creek MetroPark

Drainage improvements were made to the horse trail system in the Sebald Park Area, including the addition of aggregate slag and drainage tiles to enhance trail surfaces.

WEST CHESTER TOWNSHIP

Voice of America MetroPark

- Completed improvements to the Wiggly Field Dog Park including enlarged paddocks, an upgraded drainage system, new benches and surfaced entrances. Funding for 2019 Wiggly Field enhancements was provided by the Friends of MetroParks, via the Wiggly Field Fund through the Community Foundation of West Chester/Liberty.
- Renovations to the Mark Valentine Dock on the VOA Lake were completed in 2019. Improvements included a refurbished fishing dock, and the instillation of a bench and plaque. The Mark Valentine Dock renovations were funded by the family of Mark Valentine.



Wiggly Field Expansion Grand Reopening – Voice of America MetroPark

Park Connections Milestones

PROGRAMMING, EDUCATION AND SPECIAL EVENTS: *By the Numbers*

People who attended educational Field Trips and other Private Programs conducted across Butler County.

6,602

People who participated in 198 different Public Programs.

4,514

People who weren't afraid to get messy at Mud Mania at Rentschler Forest MetroPark.

1,952

People who participated in 20 signature MetroParks Special Events.

3,835

Total park customer/owners who participated in MetroParks' Special Events and Programs in 2019.

16,903

Percentage increase of park/customer owners served by MetroParks Programs as compared to 2018.

5%



Mud Mania – Rentschler Forest MetroPark



Field Trip – Governor Bebb MetroPark



The Howl – Voice of America MetroPark



Crazy Cardboard Regatta – Voice of America MetroPark



Creeking in the Parks – Elk Creek MetroPark, Sebald Park Area



Fun on the Farm – Chrisholm MetroPark

COMMUNITY OUTREACH

MetroParks' Park Connections staff members helped **8,178 people** learn more about what MetroParks offers to the Butler County community by participating in **22** Community Outreach Events in 2019.

Land Stewardship Milestones

CONSERVATION PROJECTS AND OPERATIONS REPORTS for MetroParks Land Stewardship Unit

INVASIVE PLANT CONTROL



Occurred in:

- Elk Creek MetroPark
- Forest Run MetroPark
- Four Mile Creek MetroPark
- Governor Bebb MetroPark
- Indian Creek MetroPark
- Salamander Run Preserve
- Miami Woods (*in partnership with Hamilton Parks Conservancy*)
- Rentschler Forest MetroPark
- Voice of America MetroPark

Why is Invasive Plant Control Important?

Invasive plant species are defined as “plants that are both non-native and able to establish on many sites, grow quickly, and spread to the point of disrupting plant communities or ecosystems”.

Invasive plants are harmful because they develop self-sustaining populations that threaten local plant life, out-competing native species for water, sunlight and other resources. The proliferation of invasive species can also increase soil erosion and degrade water quality. Controlling invasive species allows native plants to re-populate threatened areas, which improves biodiversity and creates healthier habitats for insects, mammals and other plant life.

Source: United States Department of Agriculture

396 Total acres of non-native invasive plants controlled.



Invasive Species Removal at Forest Run MetroPark, Timberman Ridge Area

REFORESTATION



639

Trees planted in the Meadow Ridge Area of Elk Creek MetroPark.

331

Trees planted in the Timberman Ridge Area of Forest Run MetroPark.

380

Trees planted at Governor Bebb MetroPark.

7

Trees planted at the Pioneer Church Area of Indian Creek MetroPark.

1,357 Total trees planted by MetroParks' staff and volunteers.



Volunteers working on a reforestation project at Elk Creek MetroPark, Meadow Ridge Area

Why is Reforestation Important?

Reforestation efforts are important to the long-term health and recovery of native habitats, which may have been damaged by farming, development or the spread of invasive, non-native species.

Reforestation projects improve overall forest health, create new wildlife habitat, help to mitigate the environmental impacts of climate change, and contribute to better local air-quality.

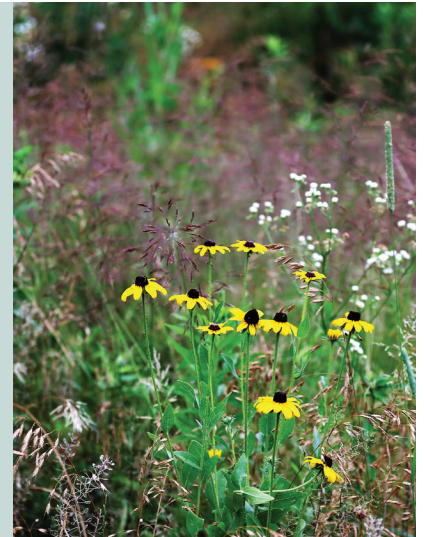
NATIVE PRAIRIE AND GRASSLAND



36 Acres of native prairie and grassland planted at Four Mile Creek MetroPark.

Why are Native Prairies and Grasslands Important?

Native prairies and grasslands are important to the stability of local ecosystems because they provide native habitat for pollinators, birds, reptiles and other animals that rely on prairies and grasslands for survival. Prairies and grasslands also help to combat erosion, with the roots of prairie and grassland plants forming complex root systems that penetrate deep into the ground and prevent soil from washing away. Native prairies and grasslands in Butler County have declined or disappeared entirely due to a combination of habitat loss and the proliferation of invasive species.



Wildflowers at Forest Run MetroPark, Timberman Ridge Area

Division of Public Safety Milestones

KEEPING THE PARKS SAFE

9,800+
patrol hours

worked by Rangers, helping to keep the parks safe.

2,700+ hours

worked by Public Safety Assistants, supporting Rangers in keeping the parks safe.

5,500 visitors assisted by Rangers.

1,000+
inspections

for visitor safety.

175,000+
people

served by Rangers and Public Safety Assistants at special events and tournaments.



Received Search and Rescue Training through the Butler County Emergency Management Agency.



Received Officer Water Survival Training in conjunction with the Ohio Division of Watercraft and the National Association of State Boating Law Administrators.



Rangers patrolling the Great Miami River Trail

Volunteering in the MetroParks

MAKING A DIFFERENCE IN THE BUTLER COUNTY COMMUNITY

MetroParks' volunteers provide their valuable time, talents and resources to the park district daily. MetroParks' volunteers support trail safety, MetroParks' education and programming efforts, improve the look and functionality of the parks, and help with park conservation efforts. There is no task too big or too small for a MetroParks volunteer!

INTERESTED IN VOLUNTEERING WITH METROPARKS?

Email volunteering@YourMetroParks.net, or visit YourMetroParks.net for more information.

6,864 hours

of service time given by volunteers in 2019.



x \$24.68/hour*



= \$169,403.52

total value of service.



*Independent Sector estimate of the national value of a volunteer hour in 2019.

MetroParks appreciates its volunteers!

Volunteers gave 12% more volunteer time in 2019 compared to 2018.



Service Day at Voice of America MetroPark, Athletic Complex



Service Day at Forest Run MetroPark, Timberman Ridge Area



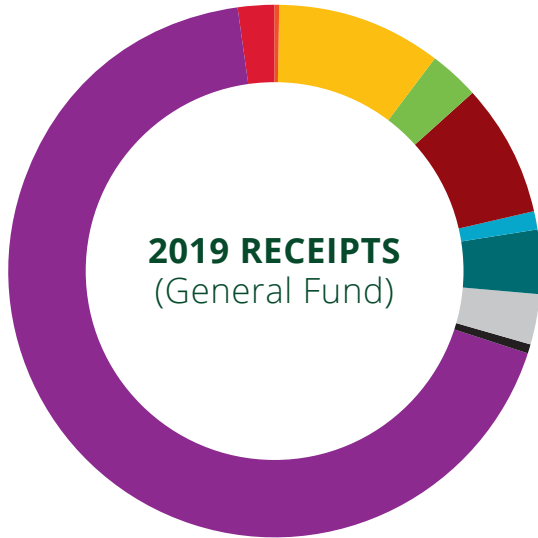
Invasive Species Removal – Indian Creek MetroPark



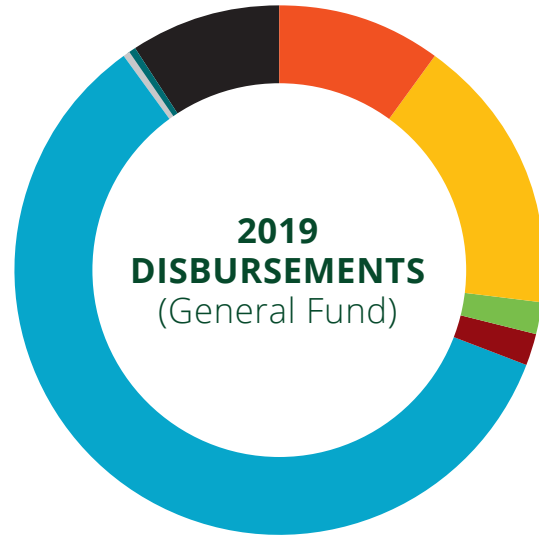
Mud Mania – Rentschler Forest MetroPark

Financial Snapshot

HOW YOUR PARKS PAY THE BILLS



Donations	<1%
Fees, Sales and Commissions	10%
Grants	3%
Homestead Rollback	8%
Interest Income (earnings on temporarily inactive funds)	1%
Local Government Funds (shared by State)	4%
Non-Resident Motor Vehicle Permit Sales	3%
Misc./Other Revenue	<1%
Levy	68%
Sponsorships	2%

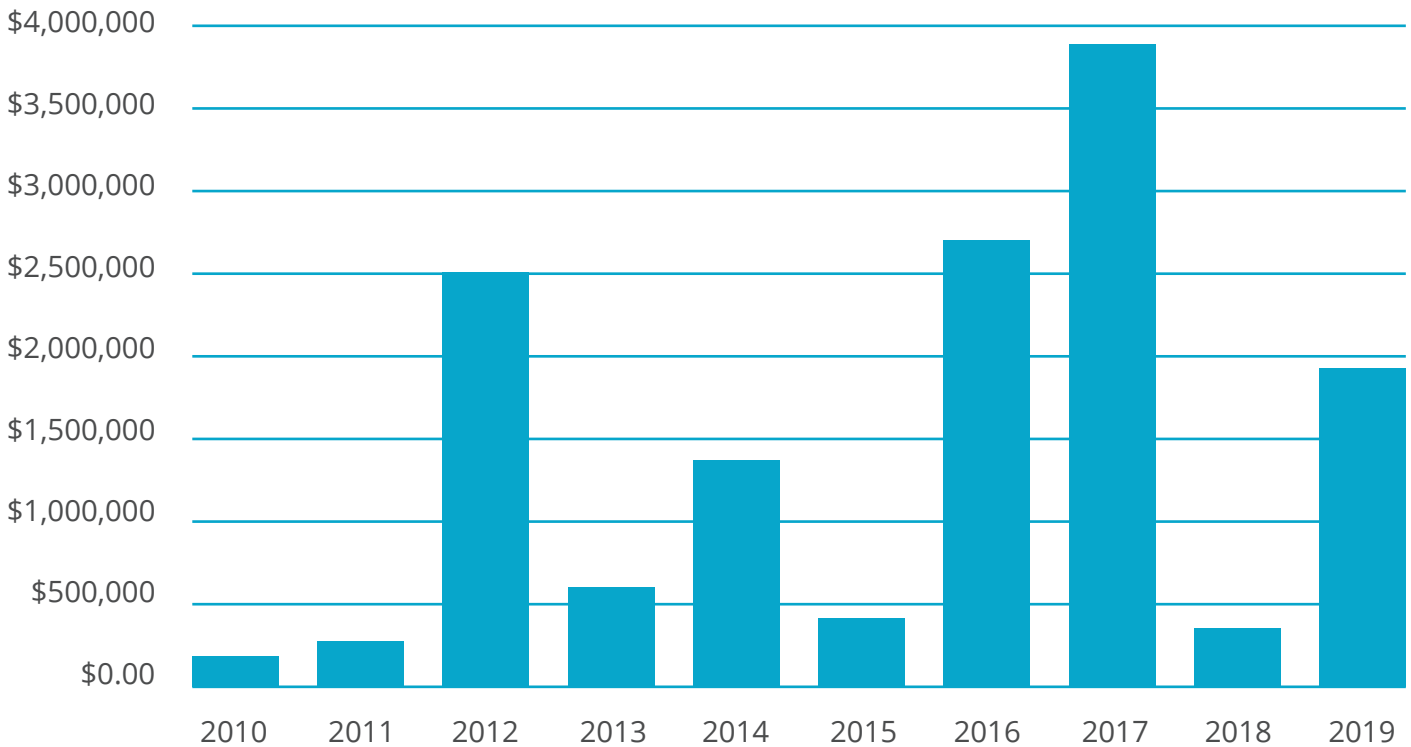


Capital Projects	10%
Contracts and Services	17%
Non Capital <15,000	2%
Other Expenses	2%
Operational Expenses	59%
Stander Property Mortgage Balance	<1%
Transfer Out to Other Funds	<1%
2017 Debt Service Transfer Out	9%

2019 CASH BALANCE (General Fund)

Beginning Cash	\$2,770,150
+ Receipts	\$7,170,746
- Disbursements	\$6,880,723
= Ending Cash	\$3,060,173

Summary of Gifts, Grants and Donations



2019 CASH BALANCE (General Fund)

Cash Donations	\$21,772.62
+ In-Kind Donations	\$9,015.86
+ Grants	\$1,766,676.96
+ Volunteer Hours	\$169,472.16
(Monetary Value)	
= Total Donations	\$1,966,937.60



MetroParks

of Butler County, OH

MetroParks of Butler County

2051 Timberman Road

Hamilton, OH 45013

513.867.5835

YourMetroParks.net

info@YourMetroParks.net

Rentschler Forest MetroPark

